



NPE_x USER GROUP 2016

Steve Box – Business Development Manager
Patrick Davy – Software Developer

Agenda

- New staff
- New subscribers
- Go-Lives
- Prospective subscribers
- Opportunities to contribute
- Service delivery
- Pathology disciplines
- Delivery of new functionality

March 2016

NPE_x Newsletter

IN THIS ISSUE

New Starters

X-Lab are pleased to announce that Andy Harris and Lana Younis have joined their team in an effort to further drive the company's current and future support and deployments across the NHS.

Webex sessions

X-Lab will begin to provide regular Webex sessions for all Live and Test users on a bi-monthly basis.

THIS Newsletter—February Edition

In the first newsletter of 2016, The Health Informatics Services (THIS) look back at the winners from their



New Starters

X-Lab are pleased to announce that Andy Harris and Lana Younis have joined their team in an effort to further drive the company's

The structure of these sessions will be entirely user focused and will center on queries, questions or concerns which may have arisen during a lab's use of NPE_x. There will also be a short dedicated section to provide a training/

Subscribers – 18 organisations

- ViaPath – Guy’s, Kings and Bedford
- HSL – UCLH, Royal Free and North Mids
- Surrey Pathology Services
- Frontier Pathology – Brighton, Surrey & Sussex
- NHS Greater Glasgow and Clyde
- NHS Lanarkshire
- UKNEQAS
- St Helens and Knowsley Teaching Hospitals NHS Trust
- NHS Lothian
- SouthWest Pathology Services

Go Live – 10 organisations

- Heart of England NHS Foundation Trust
- Oxford University Hospitals (John Radcliffe)
- Chesterfield Royal Hospitals NHS Foundation Trust
- Sandwell and West Birmingham Hospitals NHS Trust
- Derby Hospitals Foundation Trust
- NHS Grampian
- Sheffield Teaching Hospital
- NHS Lothian
- North Cumbria University Hospitals NHS Trust
- Lancashire Teaching Hospitals NHS Foundation Trust (LIMS changeover to Roche SwissLab)

Go Live (expected soon)

- Leeds Teaching Hospitals NHS Trust
- Calderdale and Huddersfield NHS Foundation Trust
- Sherwood Forest Hospitals NHS Foundation Trust

Prospective – 15 organisations

- Severn Pathology
- Royal Cornwall Hospitals NHS Trust
- The Royal Wolverhampton NHS Trust
- Dorset County NHS Foundation Trust
- Northern Devon Healthcare NHS Trust
- The Shrewsbury and Telford Hospital NHS Trust
- Walsall Healthcare NHS Trust
- Liverpool Clinical Laboratories
- Birmingham Children's Hospital NHS Foundation Trust
- County Durham and Darlington NHS Foundation Trust

Prospective – 15 organisations

- eHospital, Cambridge University Hospitals NHS Foundation Trust
- Harrogate & District NHS Foundation Trust
- The Mid Yorkshire Hospitals NHS Trust
- Countess of Chester Hospital NHS Foundation Trust
- University Hospitals of North Midlands NHS Trust

Opportunity to contribute

- Bi-monthly WebEx
- Quarterly Newsletter
- Regional workshops
- Today:
 - User interface discussion
 - Complex reporting
 - Benefits calculator

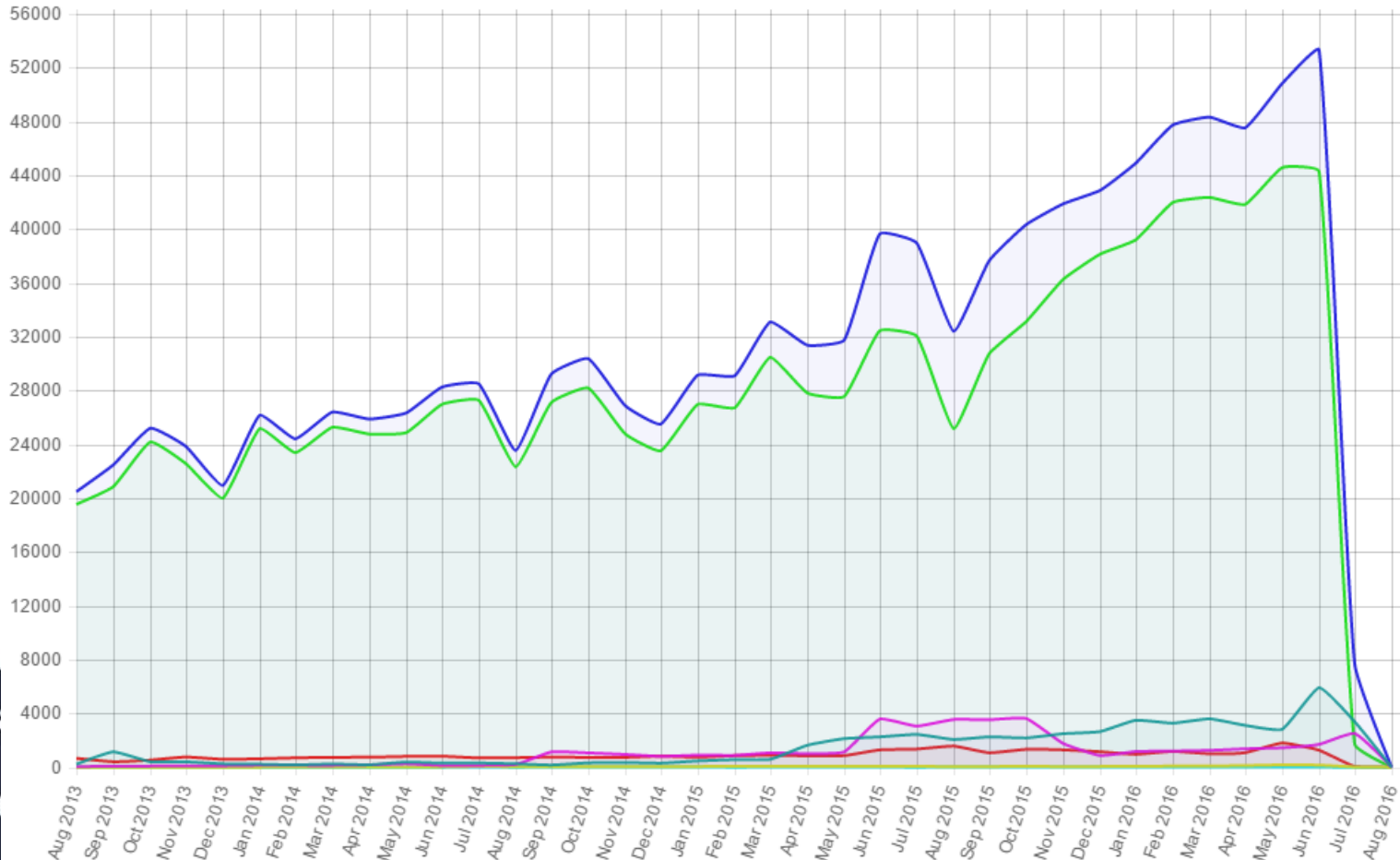
Service Delivery

Konsole Interfaces Monitor Contexts Logging Error Queue Stats

Monthly All System wide

Update

Key: Total Completed Cancelled Mapped Requested Accepted Performing



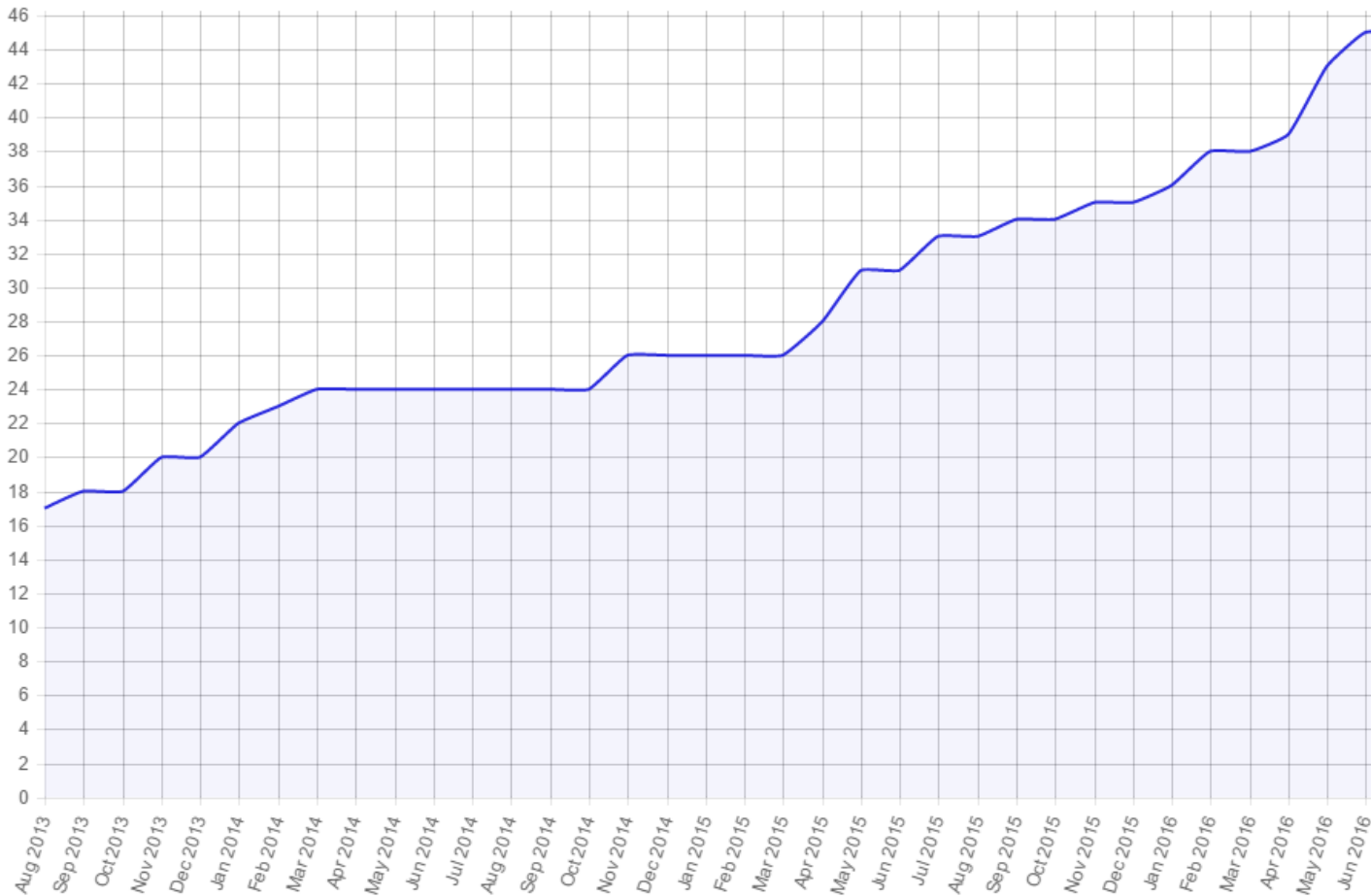
Service Delivery

Konsole Interfaces Monitor Contexts Logging Error Queue Stats

Monthly All Live lab count

Update

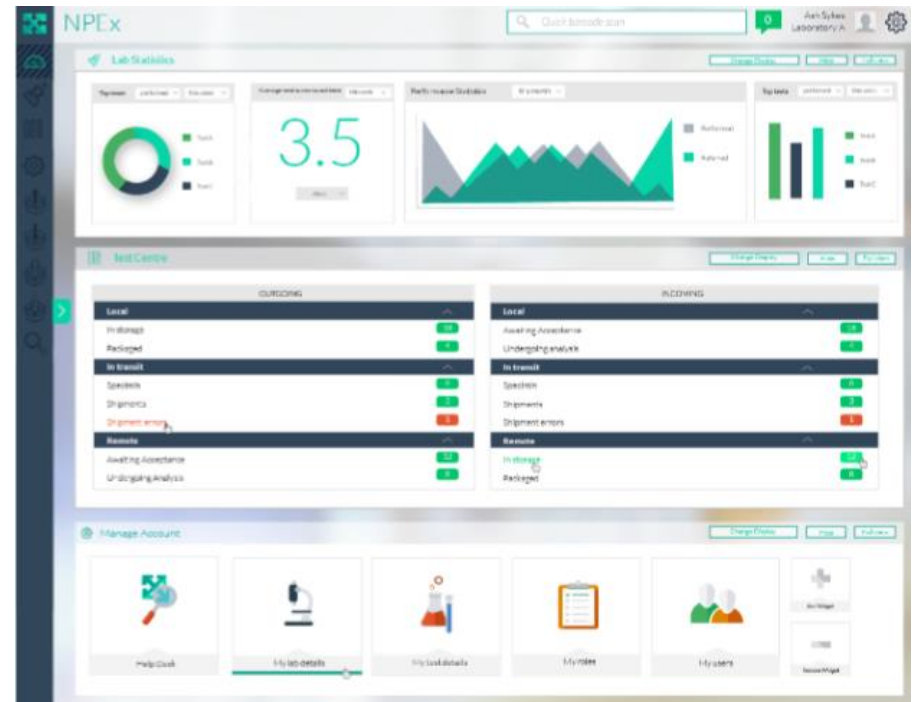
Key: Labs with > 100 requests



Pathology Disciplines

- Virology
- Serology
- CellPath
- Bacteriology

New User Interface



Development Approach

- Customer Driven
- Focus on stability
- Proactive rather than reactive support

The Past 12 Months

- Finer grained code configuration
- Custom Manifests for performing labs
- Performance enhancements
- Result forwarding options
- Flexible request routing

The Next 12 Months

- NPE_x community discussion forum
- Notification improvements
- Improved visibility of back office statistics
- Interface Status Indicators
- New user interface